

Plena Voice Alarm System



Security Systems

en | Software Manual
Configuration Software

BOSCH

Table of Contents

Table of Contents	3
1. Introduction	5
1.1 Purpose	5
1.2 Digital document	5
1.3 Intended audience	5
1.4 Related documentation	5
2. Getting started	7
2.1 Introduction	7
2.2 System requirements	7
2.3 Installation	7
2.4 Connection	8
2.5 Start	8
2.6 Main menu	9
2.6.1 Overview	9
2.6.2 System	9
2.6.3 Zones	9
2.6.4 Supervision	9
2.6.5 Messages	9
2.6.6 Action programming	9
2.6.7 Save configuration file	9
2.6.8 Open configuration file	9
2.6.9 Modify password	9
2.6.10 Upload configuration	9
2.6.11 Upload all	9
3. System	11
3.1 Overview	11
3.2 Voice alarm controller	11
3.3 Voice alarm routers	11
3.4 Call stations	11
3.5 Call station keypads	11
3.6 Remote control panels	12
3.7 Control panel extensions	12
3.8 Volume overrides	12
3.9 Digital messages	12
4. Zones	13
4.1 Overview	13
4.2 Zones	13
4.2.1 Introduction	13
4.2.2 Rename zones	13
4.3 Zone groups	13
4.3.1 Introduction	13
4.3.2 New zone group	14
4.3.3 Delete zone groups	15
4.3.4 Rename zone groups	15
5. Supervision	17
5.1 Overview	17

5.2	Network	17
5.3	Power amplifiers	17
5.4	Ground short	17
5.5	Mains power	17
5.6	Battery	17
5.7	Message	17
5.8	EMG mic	17
5.9	Line supervision	18
5.9.1	General	18
5.9.2	Impedance supervision	18
5.9.3	Short-circuit supervision	18
5.10	Input supervision	19
6.	Messages	21
6.1	Overview	21
6.2	About messages	21
6.2.1	Wave files	21
6.2.2	Mergeable messages	21
6.3	Select wave files	22
6.3.1	Overview	22
6.3.2	Add wave files	23
6.3.3	Listen to wave files	23
6.3.4	Remove wave files	23
6.4	Edit templates	23
6.4.1	Overview	23
6.4.2	Create a template	24
6.4.3	Example	24
6.5	Edit messages	26
6.5.1	Overview	26
6.5.2	Create a message	27
6.5.3	Create a mergeable message	28
6.5.4	Example	28
6.5.5	Listen to messages	29
6.5.6	Delete messages	30
6.5.7	Rename messages	30
7.	Action programming	31
7.1	Overview	31
7.2	Controller	31
7.2.1	Overview	31
7.2.2	Front panel	31
7.2.3	EMG trigger	32
7.2.4	Business trigger	33
7.2.5	Mic/line input	34
7.3	Router	34
7.4	Call station	35
7.4.1	Introduction	35
7.4.2	Main	35
7.4.3	Keypad	36

1 Introduction

1.1 Purpose

The purpose of the Configuration Software Manual is to provide information that is required to install and use the Plena Voice Alarm System Configuration Software.

1.2 Digital document

The Configuration Software Manual is also available as a digital document in the Adobe Portable Document Format (PDF). All references to pages, figures, tables, etc. in this digital document contain hyperlinks to the referenced location.

1.3 Intended audience

The Configuration Software Manual is intended for installers of extensive systems. To operate the configuration software, knowledge of the Microsoft Windows operating system is required.

1.4 Related documentation

The following related documents are available:

- Plena Voice Alarm System Basic System Manual (9922 141 1036x).
- Plena Voice Alarm System Installation and User Instructions (9922 141 1037x).

Intentionally left blank.

2 Getting started

2.1 Introduction

This chapter describes how to install the configuration software, connect a PC to a PLN-V6C240 Voice Alarm Controller and start the software. This chapter also provides information about the user interface of the configuration software.

2.2 System requirements

The configuration software can be installed on any PC running the Microsoft Windows 2000 or Microsoft Windows XP operating system. Make sure that the PC is working correctly and free of viruses before installing the software.

2.3 Installation

Proceed as follows:

- Put the Plena CD-ROM in the CD-ROM drive of the PC. The CD-ROM starts automatically and a window similar to the one in figure 2.1 appears. If the CD-ROM does not start automatically:
 - Go to Start > Run.
 - Enter X:\index.html. (Replace X with the character of the CD-ROM drive.)

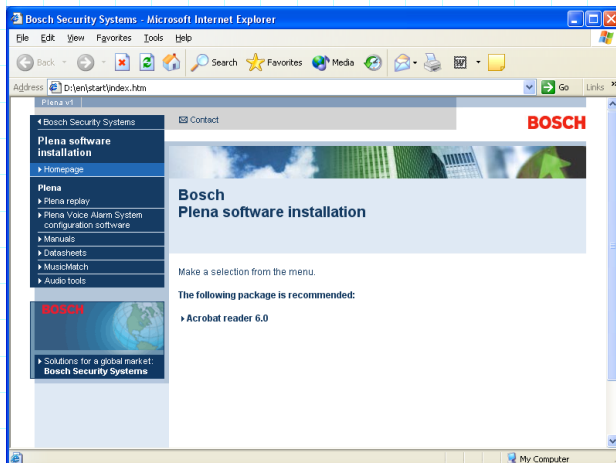


figure 2.1: Index

- Click Plena Voice Alarm System configuration software in the left, blue column. A window similar to the one in figure 2.2 appears.

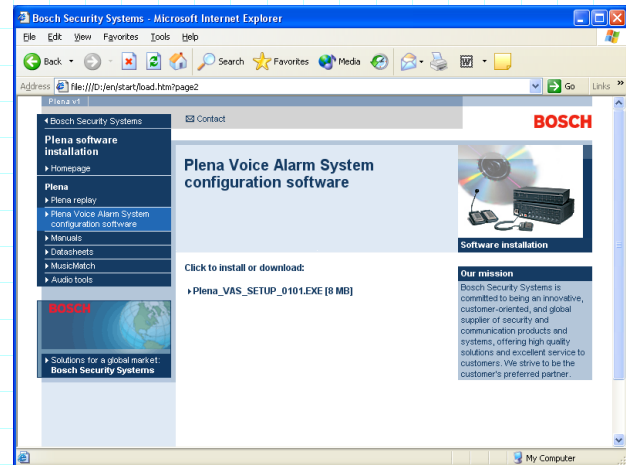


figure 2.2: Set-up file

- Click Plena_VAS_SETUP_0101.EXE. A window similar to the one in figure 2.3 appears.

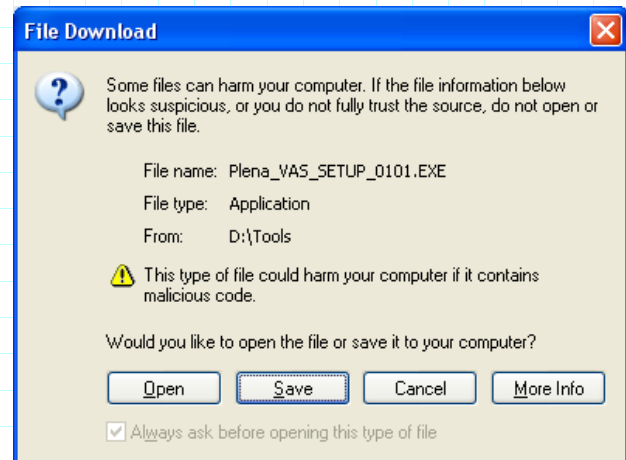


figure 2.3: File download

- Click Open to open the set-up file of the configuration software. A window similar to the one in figure 2.4 appears. Follow the instructions that are displayed on screen.

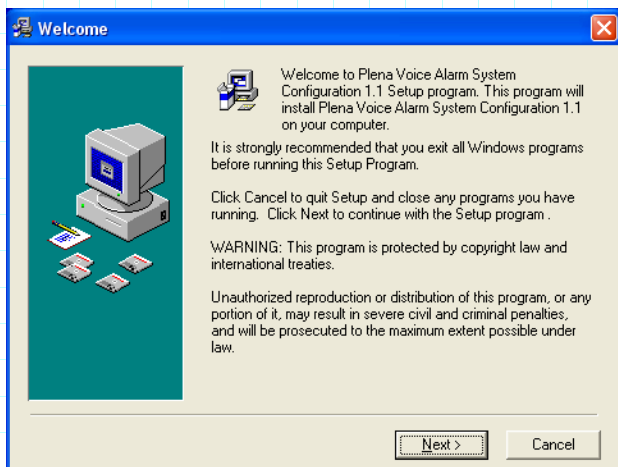


figure 2.4: Set-up file

2.4 Connection

The PLN-V6C240 Voice Alarm Controller can be connected to a PC with the supplied USB cable (see figure 2.5). It is not necessary to switch the voice alarm controller off.



Note

The configuration software can also be started without a connection to a voice alarm controller. For example, to prepare configuration files for a new system.

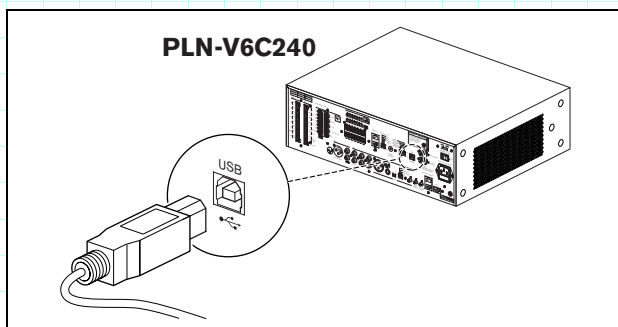


figure 2.5: Connection

2.5 Start

Proceed as follows:

- Go to the desktop of Windows (see figure 2.6 for an example).



figure 2.6: Desktop

- Double-click the Plena Voice Alarm System Configuration icon. A window similar to the one in figure 2.7 appears.

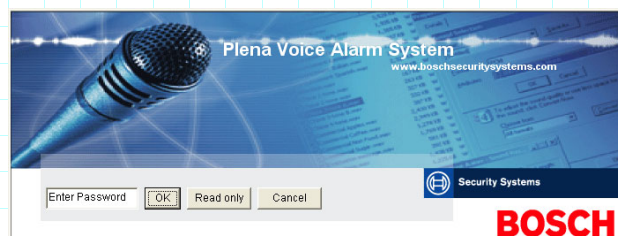


figure 2.7: Password

- Enter the password in the Enter password field and click the OK button. A window similar to the one in figure 2.8 appears.



Note

The default password is 12345678. The password can be changed with the configuration software (see section 2.6.9).

2.6 Main menu

2.6.1 Overview

The main menu (see figure 2.8) gives access to all windows of the configuration software.

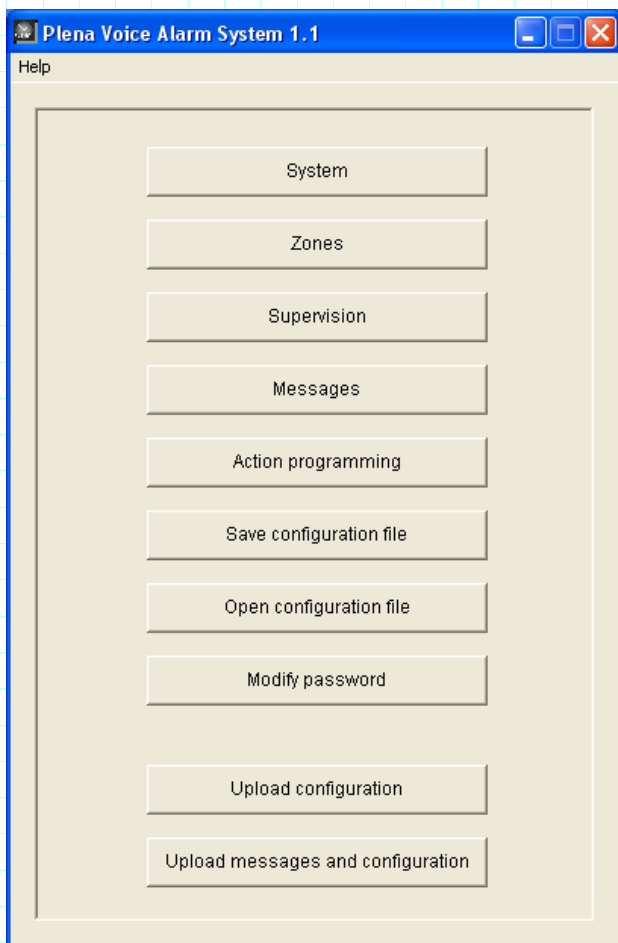


figure 2.8: Main menu

2.6.2 System

The System button opens the System window. Use this window (see chapter 3) to enter information about the hardware of which the system consists.

2.6.3 Zones

The Zones button opens the Zones window (see chapter 4). Use this window to rename zones and manage zone groups.

2.6.4 Supervision

The Supervision button opens the Supervision window (see chapter 5). Use this window to configure the supervision settings of the system.

2.6.5 Messages

The Messages button opens the Messages window (see chapter 6). Use this window to manage messages.

2.6.6 Action programming

The Action programming button opens the Action programming window (see chapter 7). Use this window to program the actions of buttons, trigger inputs etc.

2.6.7 Save configuration file

Use the Save configuration file button to save the current configuration file.

2.6.8 Open configuration file

Use the Open configuration file button to open another configuration file.

2.6.9 Modify password

Use the Modify password button to modify the password that gives access to the configuration software.

2.6.10 Upload configuration

Use the Upload configuration button to upload the current configuration file to the voice alarm controller. The selected wave files are not uploaded to the voice alarm controller.

2.6.11 Upload all

Use the Upload messages and configuration button to upload the current configuration file and all selected wave files to the voice alarm controller.

Intentionally left blank.

3 System

3.1 Overview

Use the System window (see figure 3.1) to enter information about the hardware of which the system consists.

figure 3.1: System window

The buttons at the bottom of the System window are used to:

- Save changes (Save)
- Cancel changes (Cancel)
- Close the window (Close)

3.2 Voice alarm controller

A Plena Voice Alarm System always contains 1 PLN-V6C240 Voice Alarm Controller. It is not possible to change the number of voice alarm controllers with the configuration software.

3.3 Voice alarm routers

Use the Number of routers drop-down list to select the number of PLN-V6R Voice Alarm Routers in the system (0 - 9).

3.4 Call stations

Use the Number of call stations drop-down list to select the number of PLN-V6CS Call Stations in the system (0 - 8).

3.5 Call station keypads

Use the Number of call station keypads drop-down lists to select the number of PLN-V7CSKP Call Station Keypads that are connected to each call station in the system (0 - 8).



Note

The number of the call station is equal to the ID that is set during the hardware configuration of the system.



Note

See the Plena Voice Alarm System Installation and User Instructions (9922 141 1037x) for more information about the hardware configuration of the system.

3.6 Remote control panels

Use the Number of RC panels drop-down list to select the number of PLN-V6RC remote control panels in the system. For future use.

3.7 Control panel extensions

Use the Number of RCP extensions drop-down list to select the number of PLN-V6RCE Remote Control Panels that are connected to each remote control panel in the system. For future use.

3.8 Volume overrides

Put a checkmark in the 3 wires local volume control box if the system uses 3 wire volume override. If the system uses 4 wire volume override, make sure that the 3 wires local volume control box is empty.

3.9 Digital messages

Put a checkmark in the Digital message control only controls business messages when the digital message volume control on the rear of the voice alarm controller only must control the volume of business message and must not control the volume of emergency messages.

**Note**

See the Plena Voice Alarm System Installation and User Instructions (9922 141 1037x) for more information about the digital message volume control.

4 Zones

4.1 Overview

Use the Zones window (see figure 4.1) to rename zones and manage zone groups.

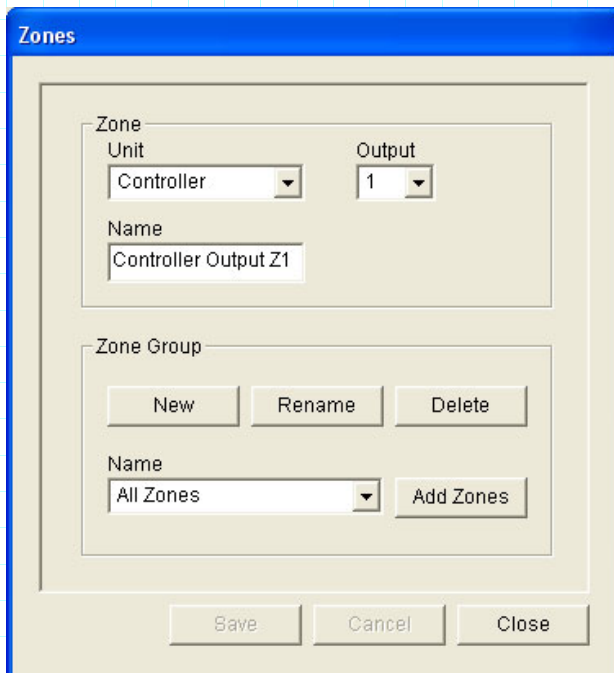


figure 4.1: Zones window

The buttons at the bottom of the Zones window are used to:

- Save changes (Save)
- Cancel changes (Cancel)
- Close the window (Close)

4.2 Zones

4.2.1 Introduction

All zones have a default name:

- Zones that are connected to the voice alarm controller are named: Controller Output Z1, Controller Output Z2, ..., Controller Output Z6.
- Zones that are connected to a voice alarm router are named: Router N Output Z1, Router N Output Z2, ..., Router N Output Z6.



Note

N is the number of the voice alarm router. This is equal to the ID that is set during the hardware configuration of the system.



Note

See the Plena Voice Alarm System Installation and User Instructions (9922 141 1037x) for more information about the hardware configuration of the system.

4.2.2 Rename zones

Proceed as follows:

- 1 Select the unit to which the zone is connected from the Unit drop-down list (Controller, Router 1 - 9).
- 2 Select the zone output to which the zone is connected from the Output drop-down list (1 - 6).
- 3 Click in the Name field and change the name of the zone.
- 4 Click the Save button to save the changes.

4.3 Zone groups

4.3.1 Introduction

Zone groups combine related zones and make it possible to select multiple zones at the same time. For example, in a hotel, the following zones could be added to the zone group Floors: Floor 1, Floor 2, Floor 3 etc.

4.3.2 New zone group

Proceed as follows:

- 1 Click the New button. A window similar to the one in figure 4.2 appears.



figure 4.2: New zone group, step 1

- 2 Enter the name of the new zone group in the text box (e.g. Floors) and push the OK button. The window disappears and the name of the new zone group is displayed in the Zones window (see figure 4.3 for an example).

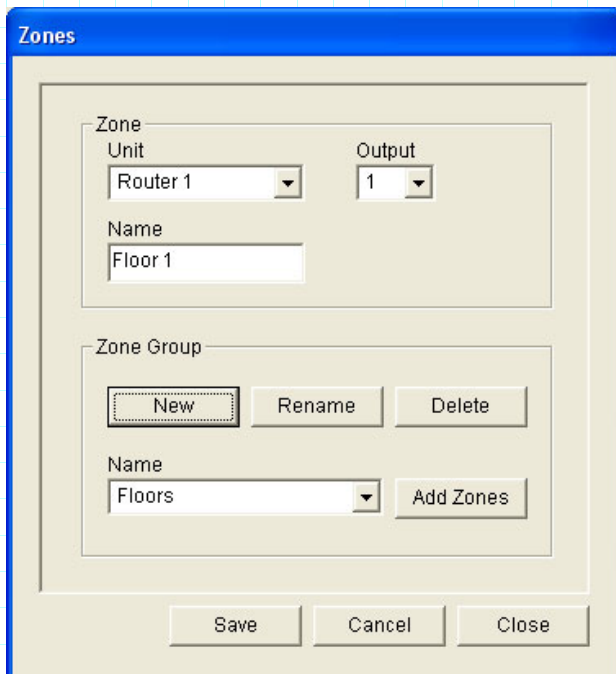


figure 4.3: New zone group, step 2

- 3 Click the Add zones button to add zones to the zone group. A window similar to the one in figure 4.4 appears.

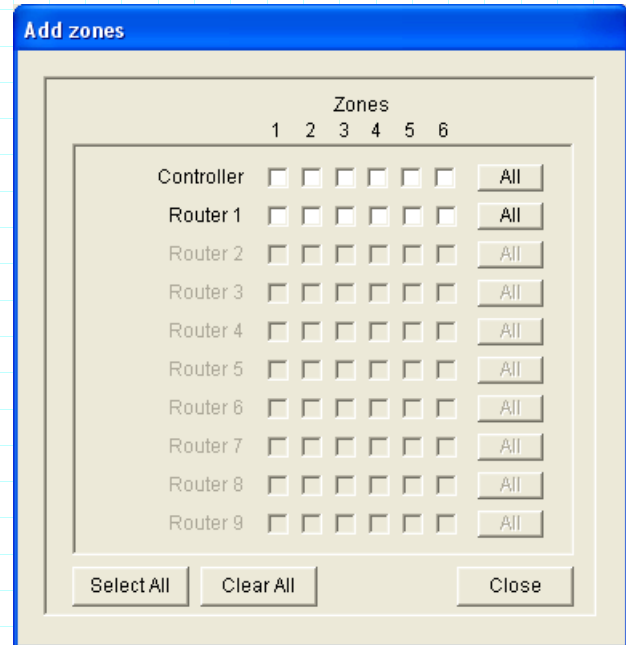


figure 4.4: New zone, step 3

- 4 Put checkmarks in the boxes of the zones that must be added to the zone group:
 - The All buttons make it possible to put checkmarks in the boxes of all zones of a unit.
 - The Select All button makes it possible to put checkmarks in the boxes of all zones in the system.
 - The Clear All button clears the checkmarks from the boxes of all zones in the system.
- 5 Click the Close button to close the Add zones window. The Zones window (see figure 4.3 for an example) appears again.
- 6 Click the Save button to save the changes.

4.3.3 Delete zone groups

Proceed as follows:

- 1 Select the zone group that must be deleted from the Name drop-down list in the Zone Group block.
- 2 Click the Delete button to delete the zone group.



Note

The zones themselves are not deleted from the system.

4.3.4 Rename zone groups

Proceeds as follows:

- 1 Select the zone group that must be renamed from the Name drop-down list in the Zone Group block (e.g. Floors).
- 2 Click the Rename button. A window similar to the one in figure 4.5 appears.

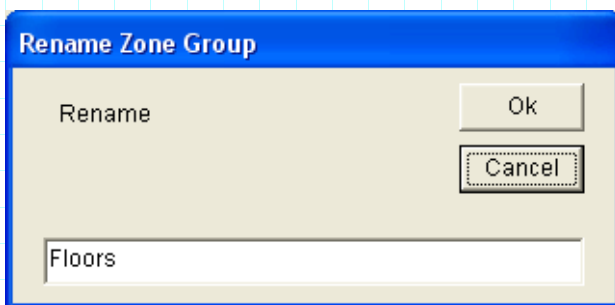


figure 4.5: Rename zone group, step 2

- 3 Enter the new name of the zone group in the text box (e.g. Visitors' wing) and push the OK button. The window disappears and the new name of the zone group is displayed in the Zones window (see figure 4.6 for an example).

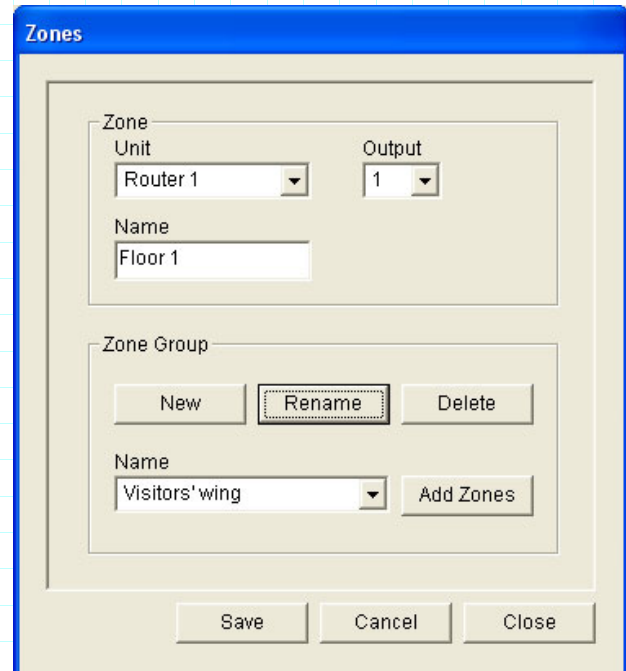


figure 4.6: Rename zone group, step 3

- 4 Click the Save button to save the changes.

Intentionally left blank.

5 Supervision

5.1 Overview

Use the Supervision window to configure the supervision settings of the system.

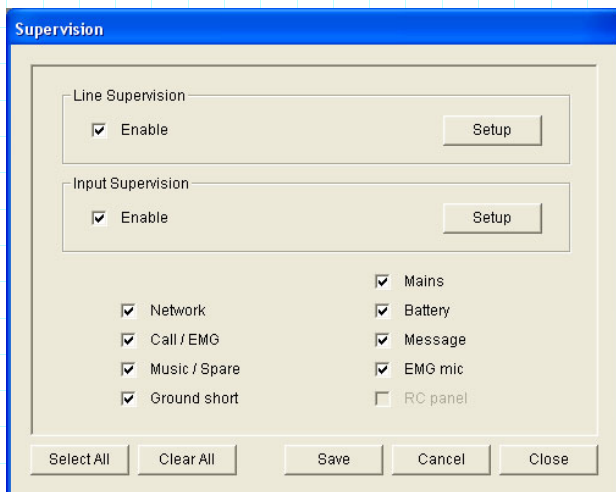


figure 5.1: Supervision window



Note

See the Plena Voice Alarm System Installation and User Instructions (9922 141 1037x) for more information about supervision.

The buttons at the bottom of the Supervision window are used to:

- Save changes (Save)
- Cancel changes (Cancel)
- Close the window (Close)
- Enable supervision of all functions (Select All)
- Disable supervision of all functions (Clear All)

5.2 Network

Use the Network box to enable and disable supervision of the network. By default, this box contains a checkmark, which means that supervision of the network is enabled.

5.3 Power amplifiers

Use the Call/EMG checkbox to enable and disable supervision of the call power amplifier. By default, this box contains a checkmark, which means that supervision of the call power amplifier is enabled.

Use the Music/Spare checkbox to enable and disable supervision of the BGM/spare power amplifier. By default, this box contains a checkmark, which means that supervision of the BGM/spare power amplifier is enabled.

5.4 Ground short

Use the Ground short box to enable and disable ground short supervision. By default, this box contains a checkmark, which means that ground short supervision is enabled.

5.5 Mains power

Use the Mains box to enable and disable mains power supervision. By default, this box contains a checkmark, which means that mains power supervision is enabled.

5.6 Battery

Use the Battery box to enable and disable battery supervision. By default, this box contains a checkmark, which means that battery supervision is enabled.

5.7 Message

Use the Message box to enable and disable message supervision. By default, this box contains a checkmark, which means that message supervision is enabled.

5.8 EMG mic

Use the EMG mic box to enable and disable supervision of the hand-held emergency microphone that is connected to the voice alarm controller. By default, this box contains a checkmark, which means that supervision of the emergency microphone is enabled.

5.9 Line supervision

5.9.1 General

Use the Enable box in the Line Supervision block to enable and disable line supervision. By default, this box contains a checkmark, which means that line supervision is enabled. Line supervision consists of:

- Impedance supervision (see section 5.9.2).
- Short-circuit supervision (see section 5.9.3).

5.9.2 Impedance supervision

The interval and accuracy of the impedance supervision can be configured. Proceed as follows:

- 1 Click the Setup button in the Line supervision block in the Supervision window. A window similar to the one in section figure 5.2 appears.

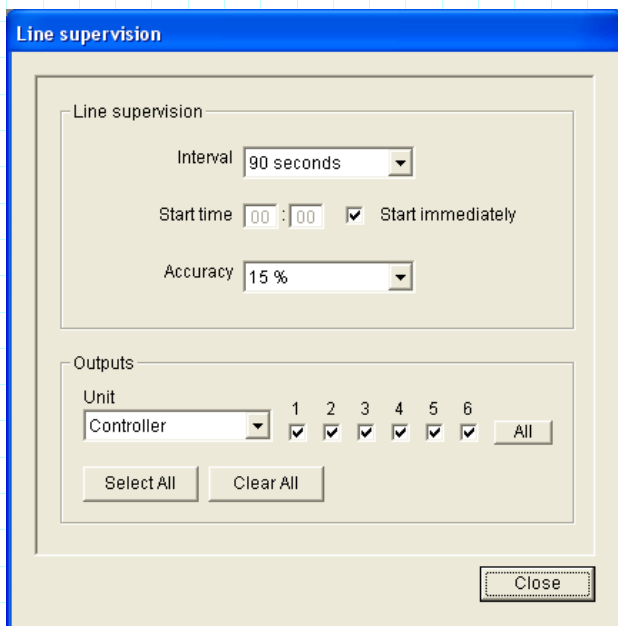


figure 5.2: Line supervision

- 2 Select the time between two successive impedance checks from the Interval drop-down list (90 seconds, 5 min, 15 min, 30 min, 1 hour, 5 hour, 10 hour, 24 hour).

- 3 Enter the time at which the line supervision must be started or put a checkmark in the Immediately box if line supervision must be started automatically.
- 4 Select the accuracy of the impedance measurement from the Accuracy drop-down list (5%, 7.5%, 10%, 15%, 20%).

5.9.3 Short-circuit supervision

Proceed as follows:

- 1 Click the Setup button in the Line supervision block in the Supervision window. A window similar to the one in section figure 5.2 appears.
- 2 Select the unit to which the loudspeaker lines are connected from the Unit drop-down list (for example, Controller).
- 3 Put a checkmark in the boxes of the zones for which short-circuit supervision must be enabled. Leave the boxes of the zones for which supervision must be disabled empty.

- The Select All button makes it possible to enable short-circuit supervision of the loudspeaker lines in all zones that are connected to the selected unit.
- The Clear All button makes it possible to disable short-circuit supervision of the loudspeaker lines in all zones that are connected to the selected unit.

5.10 Input supervision

Use the Enable box in the Input Supervision block to enable and disable line supervision. By default, this box does not contain a checkmark, which means that input supervision is disabled. Input supervision can be configured for:

- Each emergency trigger input in the system
- The mic/line input of the voice alarm controller

Proceed as follows:

- 1 Click the Setup button in the Input Supervision block in the Supervision window. A window similar to the one in figure 5.3 appears.

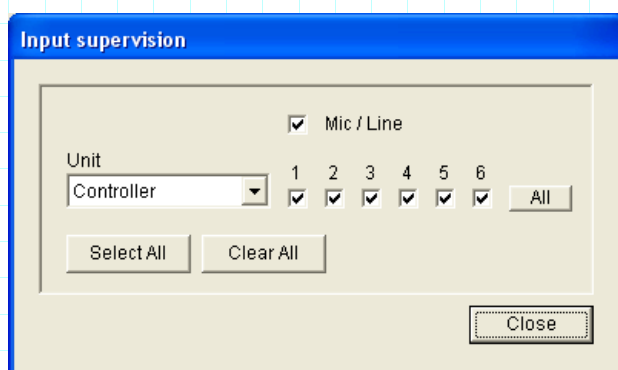


figure 5.3: Input supervision

- 2 Select the unit to which the inputs are connected from the Unit drop-down list (for example, Controller).
- 3 Put a checkmark in the boxes of the emergency trigger inputs which must be supervised. Leave the boxes of the emergency trigger inputs for which supervision must be disabled empty.
 - The Select All button makes it possible to enable supervision of all emergency trigger inputs that are connected to the selected unit.
 - The Clear All button makes it possible to disable supervision of all emergency trigger input that are connected to the selected unit.

Intentionally left blank.

6 Messages

6.1 Overview

Use the Messages window (see figure 6.1) to manage messages.

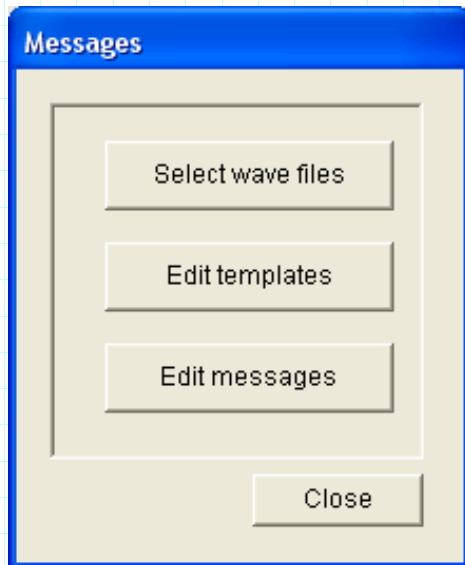


figure 6.1: Messages window

The buttons in the Messages window are used to:

- Select wave files (Select wave files)
- Edit templates (Edit templates)
- Edit messages (Edit messages)
- Close the window (Close)

6.2 About messages

6.2.1 Wave files

All messages are based on one or more wave files. These wave files must be selected from the PC. Wave files are digital sound files. The CD-ROM that is supplied with the voice alarm controller contains a number of these files.



Note

The default location of the supplied wave files is 'C:\Program Files\Bosch\Plena Voice Alarm System\Configuration\Sounds'.

It is also possible to create new wave files, for example with the utilities that can be found on the CD-ROM. See table 6.1 for an overview of the required characteristics of the wave files.

table 6.1: Wave file characteristics

Data format:

WAV file, 16-bit PCM, mono

Supported sample rates (fs):

24 kHz, 22.05 kHz, 16 kHz,
12 kHz, 11.025 kHz, 8 kHz

The maximum number of wave files that can be stored in the voice alarm controller is 255. The total file size of the wave files must be less than 16 MB.

6.2.2 Mergeable messages

A special type of message is a mergeable message (see section 6.4.3 for an example). When two or more calls are started that are based on the same mergeable message template and have the same priority, the calls are merged. The youngest call will not stop the oldest call in this case. With the configuration software, 4 different mergeable message templates can be created.

6.3 Select wave files

6.3.1 Overview

See figure 6.2 for an overview of the Select wave files window.

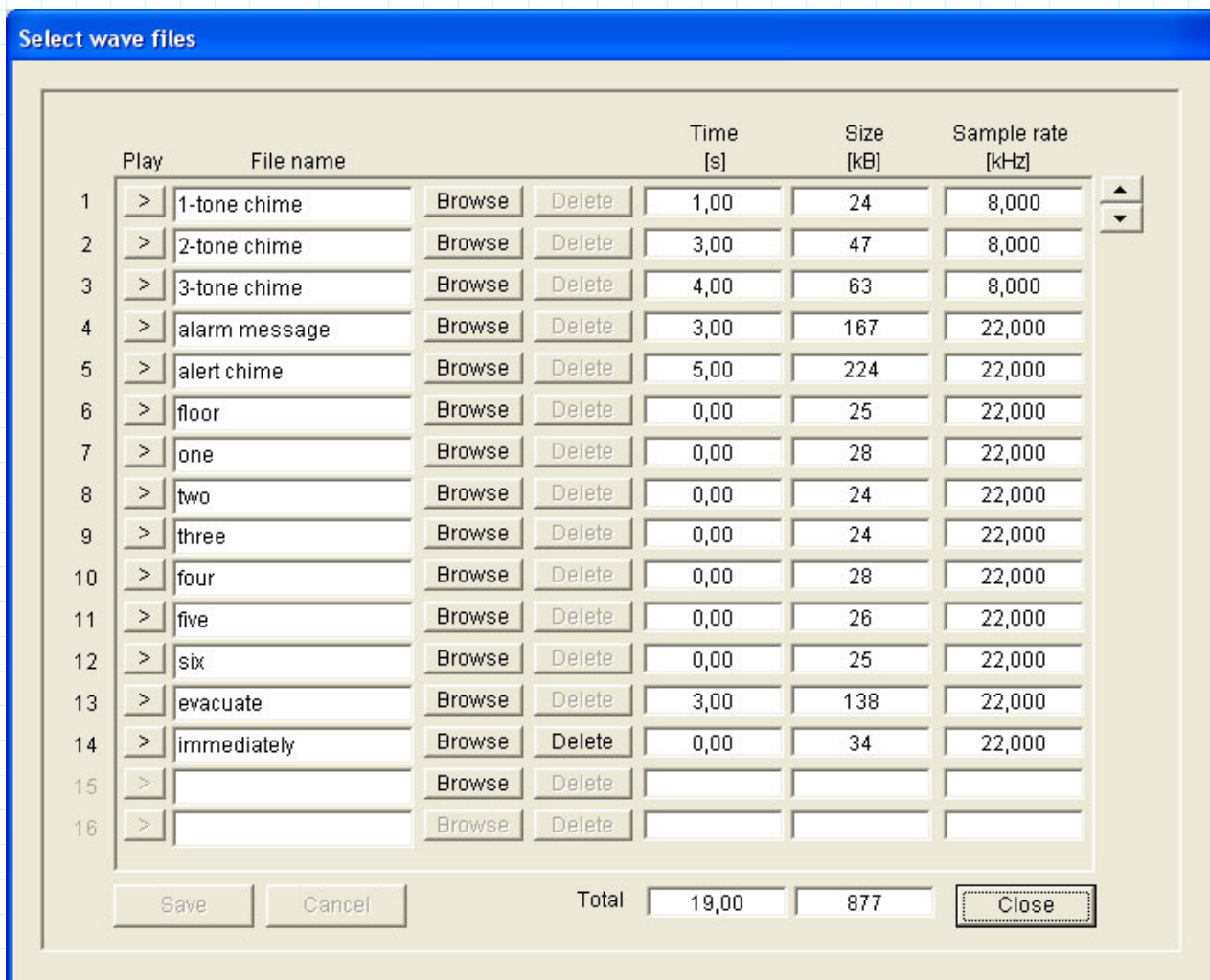


figure 6.2: Select wave files

The buttons at the bottom of the Select wave files window are used to:

- Save changes (Save)
- Cancel changes (Cancel)
- Close the window (Close)

6.3.2 Add wave files

Proceed as follows:

- 1 Go to the first empty line in the list. Wave files can only be added to the bottom of the list.
- 2 Click the Browse button. A window similar to the one in figure 6.3 appears.

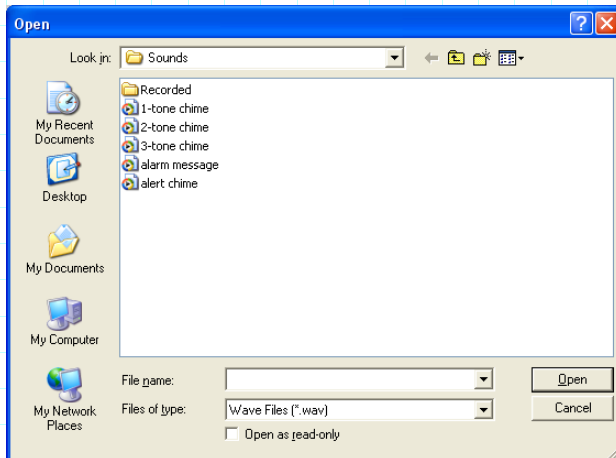


figure 6.3: Add wave files, step 2

- 3 Select the wave file and click the Open button to add the wave file and its properties to the list.

6.3.3 Listen to wave files

Proceed as follows:

- 1 Click the > button in the Play field of a wave file to listen to the wave file.

6.3.4 Remove wave files

Proceed as follows:

- 1 Click the Delete button to delete the wave file from the list. The wave file itself is not deleted from the PC.



Note

Only the last wave file in the list can be deleted. The Delete buttons of the other wave files are not available.

6.4 Edit templates

6.4.1 Overview

See figure 6.4 for an overview of the Edit mergeable message templates window.

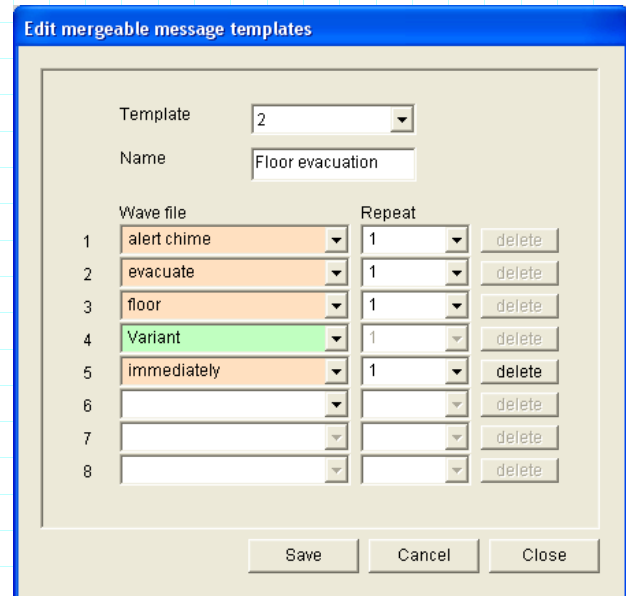


figure 6.4: Edit mergeable message templates

Each template has eight positions (1 to 8). To each of the positions a wave file can be assigned (orange) or a variant (Variant, green). In a later stage, when the actual message is created, a wave file is assigned to the variant. This makes it possible to create a number of similar messages.

6.4.2 Create a template



Note

The procedure below is the general procedure. See section 6.4.3 for an example.

Proceed as follows:

- 1 Select the number of the template from the Template drop-down list (1 - 4).
- 2 Enter a name for the template in the Name field.
- 3 Select the first component of the template from the Wave file drop-down list in row 1.
- 4 Select the number of repetitions of the first component from the Repeat drop-down list in row 1 (1 - 10).



Note

Variants cannot be repeated.

- 5 Repeat step 2 to step 4 for all other components of the template.
- 6 Click the Save button to save the changes.

6.4.3 Example

In this example, a template is created that is used for evacuation messages for the floors of the visitors' wing in a hotel. The template components are:

- An alert chime to attract the attention. The name of the wave file that contains the alert chime is alert chime in this example.
- Speech: 'Due to an emergency, it is necessary to evacuate'. The name of the wave file that contains the speech is evacuate in this example.
- Speech: 'Floor'. The name of the wave file that contains the speech is floor in this example.
- Speech that contains the number of the floor. As this is different for each floor, this component is a Variant that is not defined until the creation of the actual message (see section 6.5.4).
- Speech: 'Immediately'. The name of the wave file that contains the speech is immediately in this example.

Proceed as follows:

- 1 Open the Edit mergeable message window.
- 2 Select the number of the template from the Template drop-down list. For example, 2. An empty template is opened (see figure 6.5).

figure 6.5: Example, step 2

- 3 Enter a name for the template in the Name field. For example, Floor evacuation (see figure 6.6).

figure 6.6: Example, step 3

4 Select alert chime from the Wave file drop-down list in row 1 (see figure 6.7).

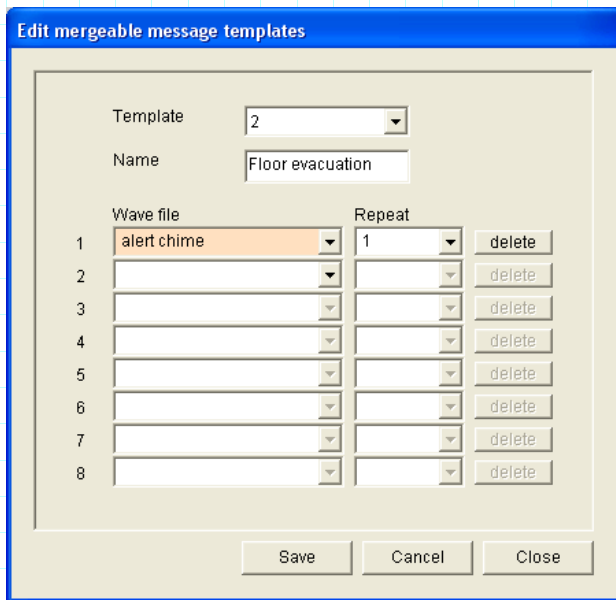


figure 6.7: Example, step 4

6 Select floor from the Wave file drop-down list in row 3 (see figure 6.9).

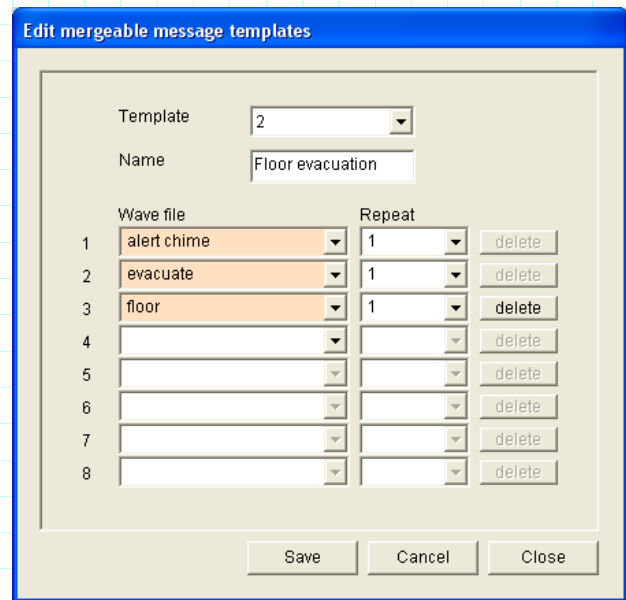


figure 6.9: Example, step 6

5 Select evacuate from the Wave file drop-down list in row 2 (see figure 6.8).

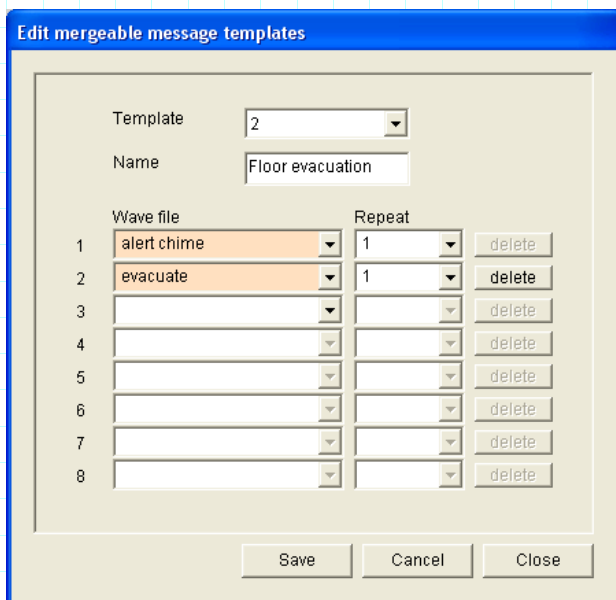


figure 6.8: Example, step 5

7 Select Variant from the Wave file drop-down list in row 4 (see figure 6.10).

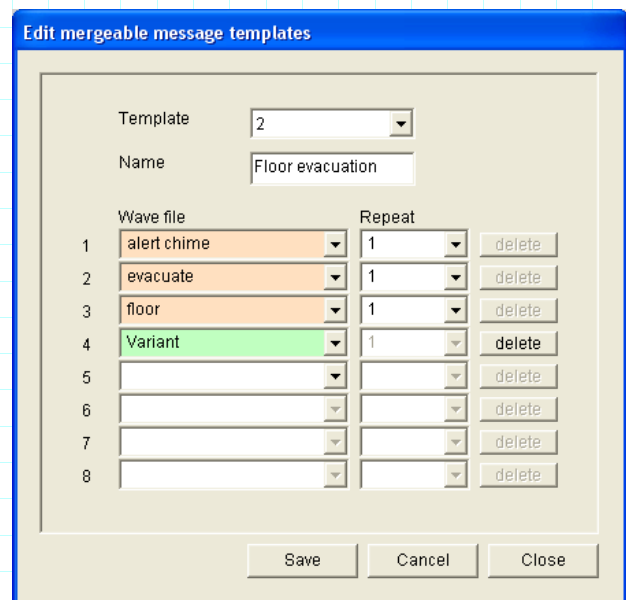


figure 6.10: Example, step 7

- Select immediately from the Wave file drop-down list in row 5 (see figure 6.11).

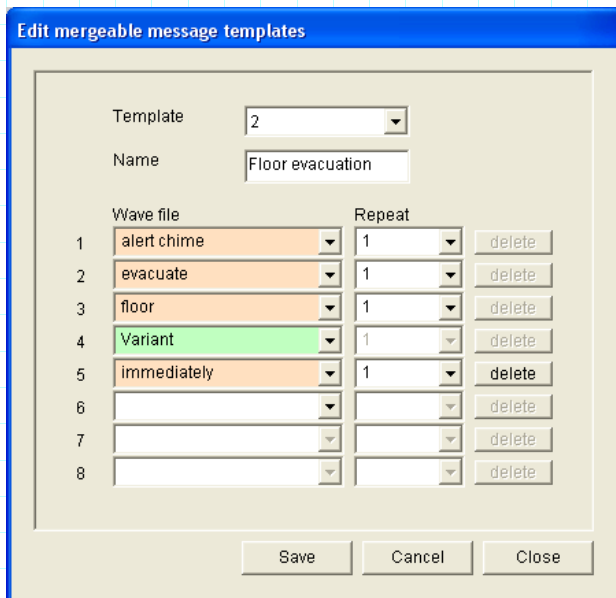


figure 6.11: Example, step 8

- Click the Save button to save the changes. The template can be used to create evacuation messages (see section 6.5.4).

6.5 Edit messages

6.5.1 Overview

See figure 6.12 for an overview of the Edit messages window.

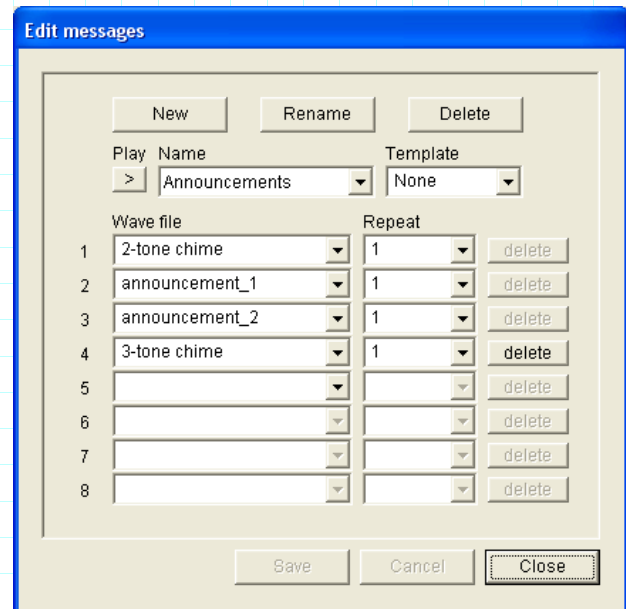


figure 6.12: Edit messages

Each message can have up to 8 components (1 - 8). To each of the positions a wave file can be assigned (orange). It is also possible to create a mergeable message that is based on a template. When a message is based on a template, wave files can only be assigned to the Variant components of the template. The other components of a mergeable message are fixed and defined by the template in this case.

6.5.2 Create a message



Note

The procedure below does not describe how to create a mergeable message. See section 6.5.3 for information about creating mergeable messages.

Proceed as follows:

- 1 Click the New button. A window similar to the one in figure 6.13 appears.

A dialog box titled "New message" with a blue header. It contains a text input field labeled "Input New Name" with the text "Message 2" entered. To the right of the input field are "Ok" and "Cancel" buttons.

figure 6.13: Create a message, step 1

- 2 Enter the name of the new message (for example, Announcements) and click the OK button. The name of the new message appears in the Edit messages window (see figure 6.14 for an example).

The "Edit messages" dialog box with a blue header. It has buttons for "New", "Rename", and "Delete". The "Play Name" dropdown is set to "Announcements" and the "Template" dropdown is set to "None". Below is a table with 8 rows, each with a "Wave file" dropdown and a "Repeat" dropdown, followed by a "delete" button. At the bottom are "Save", "Cancel", and "Close" buttons.

	Wave file	Repeat	
1			delete
2			delete
3			delete
4			delete
5			delete
6			delete
7			delete
8			delete

figure 6.14: Create a message, step 2

- 3 Select None from the Template drop-down list to create a message that is not based on a template.
- 4 Select the first component of the template from the Wave file drop-down list in row 1.
- 5 Select the number of repetitions of the first component from the Repeat drop-down list in row 1 (1 - 10).
- 6 Repeat step 4 to step 5 for all other components of the template (see figure 6.15 for an example).

The "Edit messages" dialog box with a blue header. It has buttons for "New", "Rename", and "Delete". The "Play Name" dropdown is set to "Announcements" and the "Template" dropdown is set to "None". Below is a table with 8 rows, each with a "Wave file" dropdown and a "Repeat" dropdown, followed by a "delete" button. At the bottom are "Save", "Cancel", and "Close" buttons.

	Wave file	Repeat	
1	2-tone chime	1	delete
2	announcement_1	1	delete
3	announcement_2	1	delete
4	3-tone chime	1	delete
5			delete
6			delete
7			delete
8			delete

figure 6.15: Create a message, step 6

- 7 Click the Save button to save the changes.

6.5.3 Create a mergeable message



Note

The procedure below is the general procedure. See section 6.5.4 for an example.

Proceed as follows:

- 1 Click the New button. A New message window appears.
- 2 Enter a name for the new message in the New message window and click the OK button. The name of the new message appears in the Edit messages window.
- 3 Select the mergeable message template from the Template drop-down list.
- 4 Attach wave files to the Variant components of the template. These have green Wave file fields.
- 5 Click the Save button to save the changes.

6.5.4 Example

In this example, a mergeable message is created that is used to evacuate floor 1 of the visitors' wing in a hotel. The message is based on the template that was created in section 6.4.3. The template components are:

- An alert chime to attract the attention. The name of the wave file that contains the alert chime is alert chime in this example.
- Speech: 'Due to an emergency, it is necessary to evacuate'. The name of the wave file that contains the speech is evacuate in this example.
- Speech: 'Floor'. The name of the wave file that contains the speech is floor in this example.
- Speech that contains the number of the floor. As this is different for each floor, this component is a Variant. To this component a wave file is assigned that the word 'one'. The name of the wave file that contains the speech is one in this example.
- Speech: 'Immediately'. The name of the wave file that contains the speech is immediately in this example.

When the voice alarm controller plays this message, the spoken part of the message is 'Due to an emergency, it is necessary to evacuate floor one immediately'.

Proceed as follows:

- 1 Open the Edit messages window.
- 2 Click the New button. A window similar to the one in section figure 6.16 appears.

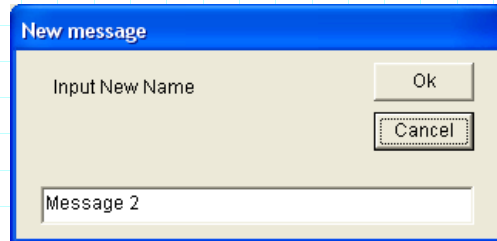


figure 6.16: Example, step 2

- 3 Enter the name of the new message (for example, Floor 1 evacuation) and click the OK button. The name of the new message appears in the Edit messages window (see figure 6.17).

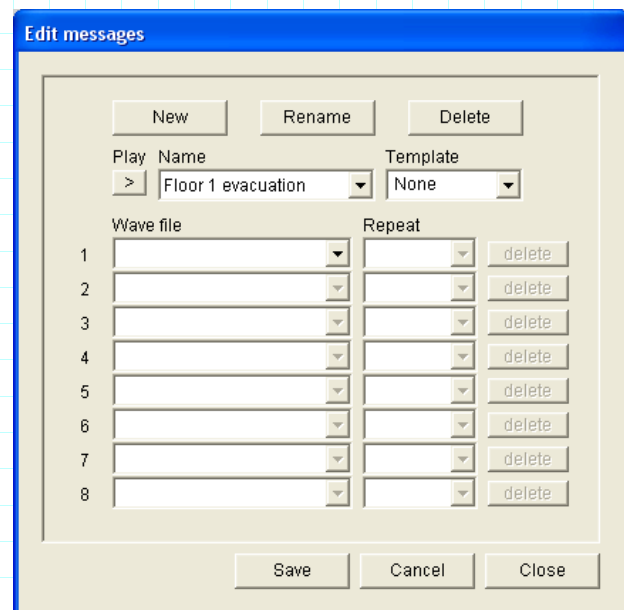


figure 6.17: Example, step 3

- Select Floor evacuation from the Template drop-down list to create a message that is based on the Floor evacuation template. All components of the template are copied to the message (see figure 6.18).

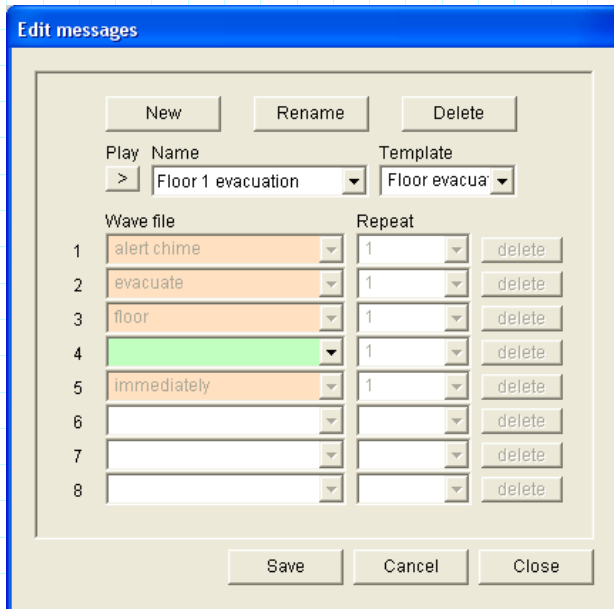


figure 6.18: Example, step 4

- Select one from the Wave file drop-down list in row 4 (see figure 6.11).

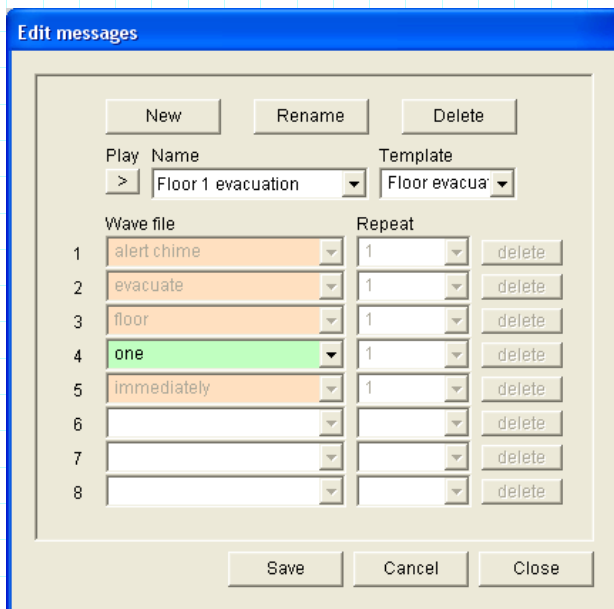


figure 6.19: Example, step 5

- Click the Save button to save the changes.

The Floor evacuation template can also be used to create an evacuation message for floor 2. Instead of assigning a wave file that contains the word 'one' to the Variant, a wave file containing the word 'two' must be assigned to the Variant (see figure 6.20 for an example). When the voice alarm controller plays this message, the spoken part of the message is 'Due to an emergency, it is necessary to evacuate floor two immediately'.

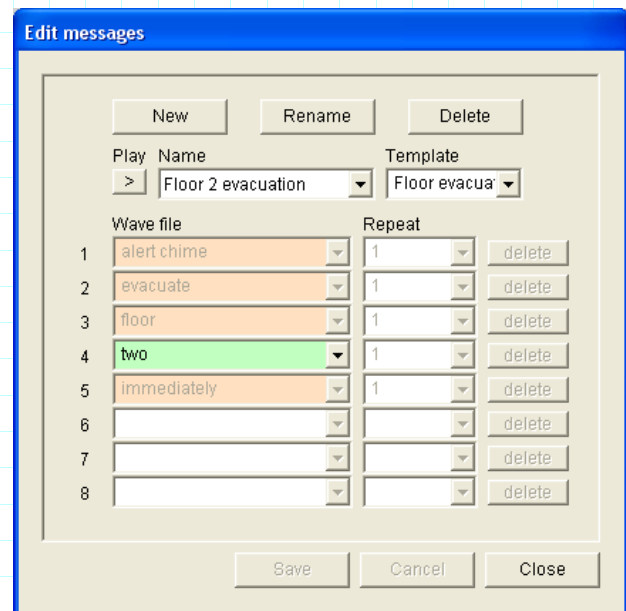


figure 6.20: Example, Floor 2 evacuation

When the voice alarm controller receives a command to play the messages Floor 1 evacuation and Floor 2 evacuation simultaneously and both commands have the same priority, the messages are merged. The spoken part of the merged message is: 'Due to an emergency it is necessary to evacuate floor 1, 2 immediately'.

6.5.5 Listen to messages

Proceed as follows:

- Click the > button in the Play field of a message to listen to the message.

6.5.6 Delete messages

Proceed as follows:

- 1 Select the message that must be deleted from the Name drop-down list.
- 2 Click the Delete button.

6.5.7 Rename messages

Proceed as follows:

- 1 Select the message that must be renamed from the Name drop-down list.
- 2 Click the Rename button. A window similar to the one in figure 6.21 appears.

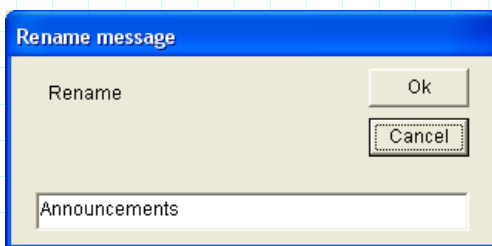


figure 6.21: Rename message, step 2

- 3 Enter the new name of the message in the text box (e.g. Commercials) and push the OK button. The window disappears and the new name is displayed in the Edit messages window (see figure 6.22 for an example).

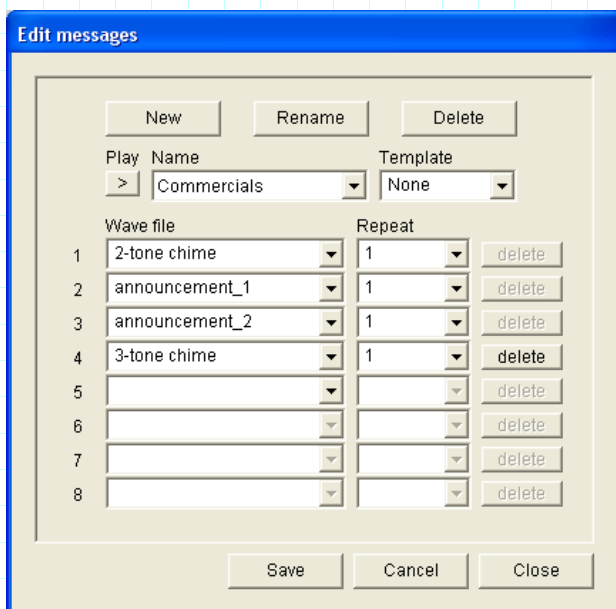


figure 6.22: Rename message, step 3

- 4 Click the Save button to save the changes.

7 Action programming

7.1 Overview

Use the Action programming window (see figure 7.1) to program the actions of buttons, trigger inputs, etc. The contents of the Action programming window depends on the type of unit for which the actions are programmed.

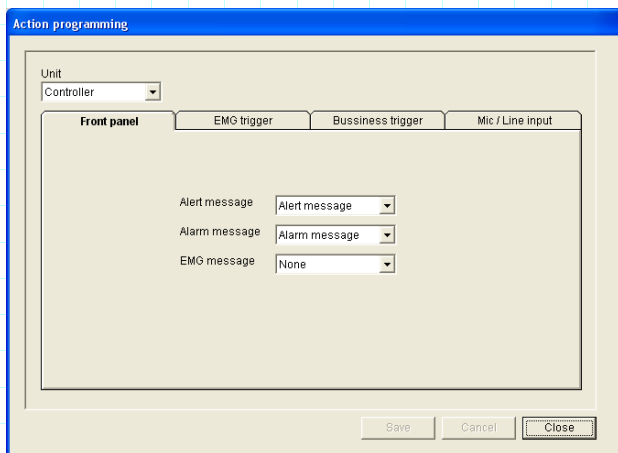


figure 7.1: Action programming

Use the Unit drop-down list to select the unit for which the actions are programmed:

- Voice alarm controller (Controller)
- Voice alarm router (Router)
- Call station (Call station)

The buttons at the bottom of the Action programming window are used to:

- Save changes (Save)
- Cancel changes (Cancel)
- Close the window (Close)

7.2 Controller

7.2.1 Overview

Use the tabs to select the items for which the actions are programmed:

- Front panel (Front panel)
- Emergency trigger inputs (EMG trigger)
- Business trigger inputs (Business trigger)
- Mic/line input (Mic/Line input)

7.2.2 Front panel

See figure 7.2 for an overview of the Front panel tab.

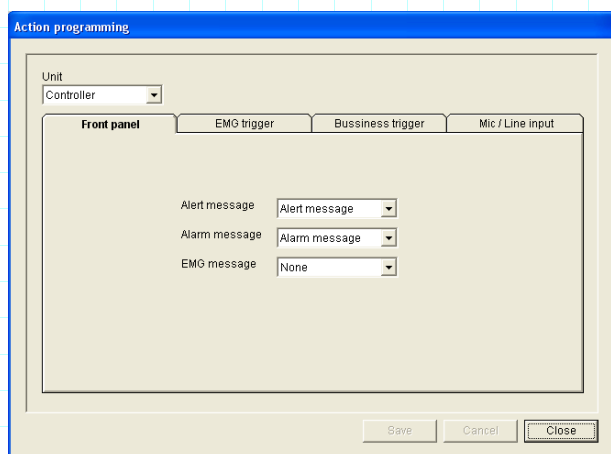


figure 7.2: Front panel

Proceed as follows:

- 1 Select the message that must be activated by the Alert message button on the front panel of the voice alarm controller from the Alert message drop-down list.
- 2 Select the message that must be activated by the Alarm message button on the front panel of the voice alarm controller from the Alarm message drop-down list.
- 3 \$more to come
- 4 Click the Save button to save the changes.

7.2.3 EMG trigger

7.2.3.1 Overview

See figure 7.3 for an overview of the EMG trigger tab.

On this tab, the actions of the emergency triggers of the voice alarm controller can be programmed.

- The specific behavior of each emergency trigger input is programmed with the Message, Select Zone and Priority drop-down lists (see section 7.2.3.2).
- The general behavior of all emergency trigger inputs is programmed with the drop-down list at the bottom of the tab (see section 7.2.3.3).

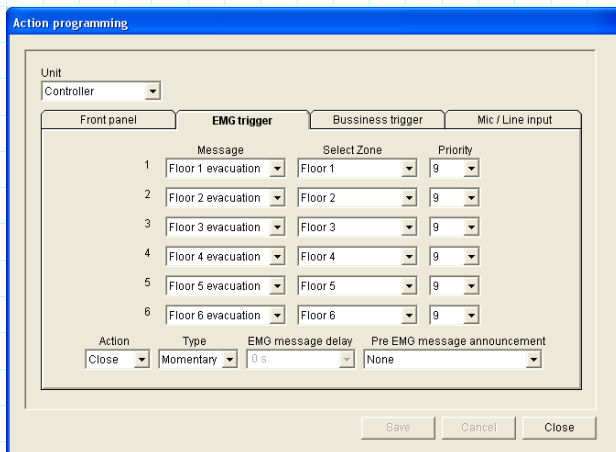


figure 7.3: EMG trigger

7.2.3.2 Specific behavior

Proceed as follows for each emergency trigger input:

- 1 Select the message that must be played when the emergency trigger input is activated from the Message drop-down list.
- 2 Select the zone or zone group to which the message must be distributed from the Select zone drop-down list.
- 3 Select the priority of the message from the Priority drop-down list.
- 4 Click the Save button to save the changes.

7.2.3.3 General behavior

Proceed as follows:

- 1 Select the action on which the programmed specific behavior of the emergency trigger inputs must be activated from the Action and Type drop-down list.
 - If Action is Close and Type is Momentary, the programmed specific behavior is active during the time the emergency trigger input is closed. See figure 7.4 for more information.

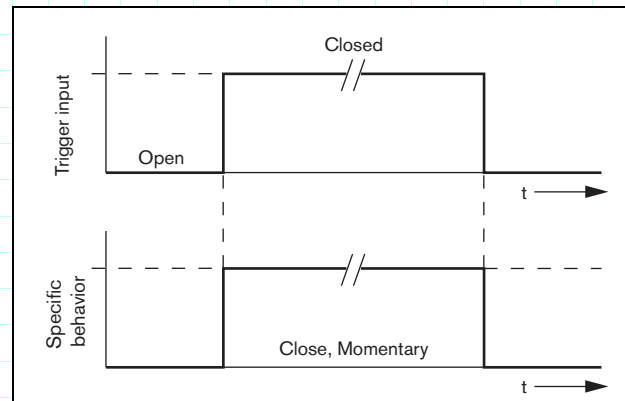


figure 7.4: Close, Momentary

- If Action is Open and Type is Momentary, the programmed specific behavior is active during the time the emergency trigger input is opened. See figure 7.5 for more information.

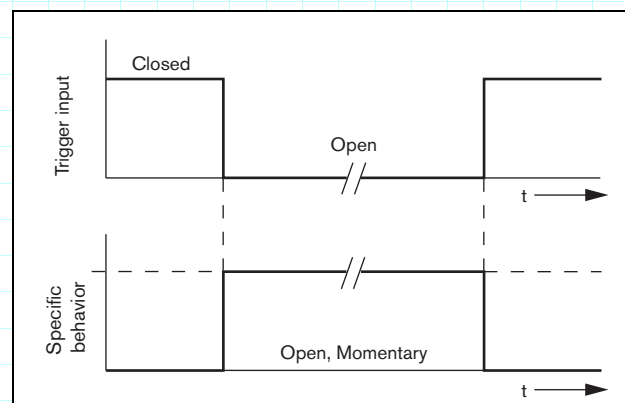


figure 7.5: Open, Momentary

- If Action is Close and Type is Toggle, the programmed specific behavior is started by a pulse that is generated when the emergency trigger input closes. See figure 7.6 for more information.

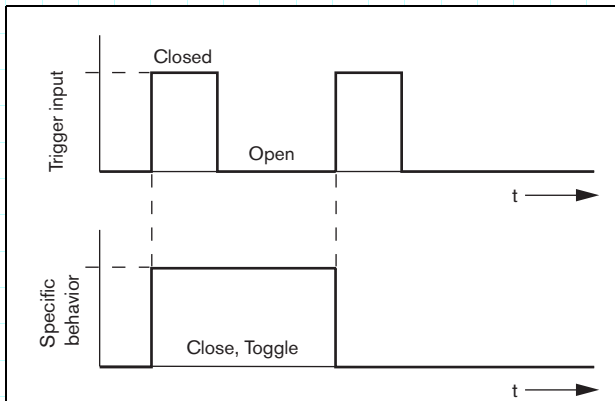


figure 7.6: Close, Toggle

- If Action is Open and Type is Toggle, the programmed specific behavior is started by a pulse that is generated when the emergency trigger input opens. See figure 7.7 for more information.

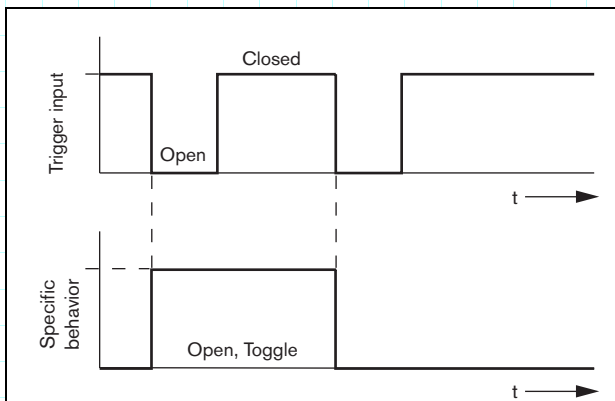


figure 7.7: Open, Toggle

- 2 Select the time that must elapse between the activation of an emergency trigger input and the programmed specific behavior with the EMG message delay drop-down list. For future use.
- 3 Select the message that must be played by the voice alarm controller before it plays the message that is part of the programmed specific behavior of an emergency trigger input with the Pre EMG message announcement drop-down list.
- 4 Click the Save button to save the changes.

7.2.4 Business trigger

7.2.4.1 Overview

See figure 7.8 for an overview of the Business trigger tab. On this tab, the actions of the business triggers of the voice alarm controller can be programmed.

- The specific behavior of each business trigger input is programmed with the Message, Select Zone and Priority drop-down lists (see section 7.2.4.2).
- The general behavior of all business trigger inputs is programmed with the drop-down list at the bottom of the tab (see section 7.2.4.3).

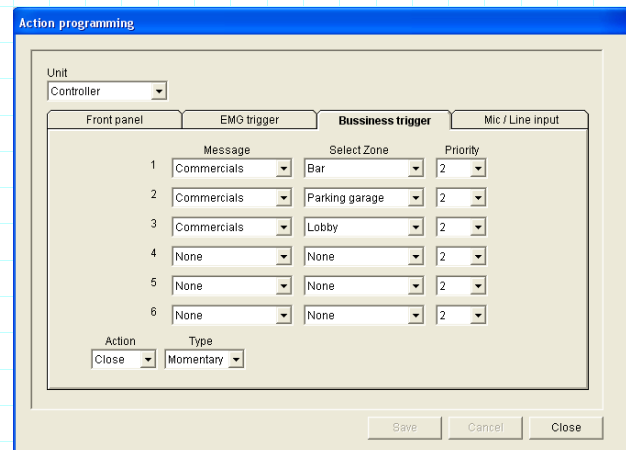


figure 7.8: Business trigger

7.2.4.2 Specific behavior

Proceed as follows for each business trigger input:

- 1 Select the message that must be played when the business trigger input is activated from the Message drop-down list.
- 2 Select the zone or zone group to which the message must be distributed from the Select zone drop-down list.
- 3 Select the priority of the message from the Priority drop-down list.
- 4 Click the Save button to save the changes.

7.2.4.3 General behavior

Proceed as follows:

- 1 Select the action on which the programmed specific behavior of the business trigger inputs must be activated from the Action and Type drop-down list.



Note

This is similar to selecting the action on which the programmed specific behavior of the emergency trigger inputs must be activated (see section 7.2.3.3, step 1).

- 2 Click the Save button to save the changes.

7.2.5 Mic/line input

See figure 7.9 for an overview of the Mic/line input tab. On this tab, the action of the mic/line input with VOX functionality of the voice alarm controller can be programmed.

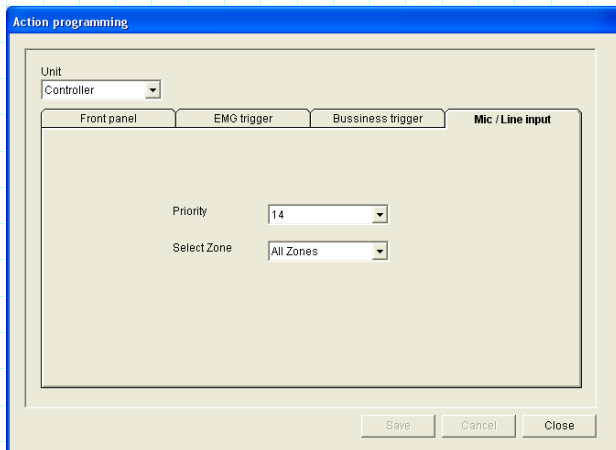


figure 7.9: Mic/Line input tab

Proceed as follows:

- 1 Select the priority of the mic/line input with VOX functionality of the voice alarm controller from the Priority drop-down list (2 - 14).
- 2 Select the zone or zone group to which the audio of the mic/line input with VOX functionality of the voice alarm controller must be distributed from the Select zone drop-down list.
- 3 Click the Save button to save the changes.

7.3 Router

Use the tabs to select the items for which the actions are programmed:

- Emergency trigger inputs (EMG trigger)



Note

Programming the actions of the emergency trigger inputs of a voice alarm router is similar to programming the actions of the emergency triggers inputs of a voice alarm router. See section 7.2.3 for more information.

- Business trigger inputs (Business trigger)



Note

Programming the actions of the business trigger inputs of a voice alarm router is similar to programming the actions of the business triggers inputs of a voice alarm router. See section 7.2.3 for more information.

7.4 Call station

7.4.1 Introduction

Use the tabs to select the items for which the actions are programmed:

- Call station (Main)
- Call station keypads (Keypad).

7.4.2 Main

See figure 7.10 for an overview of the Main tab.

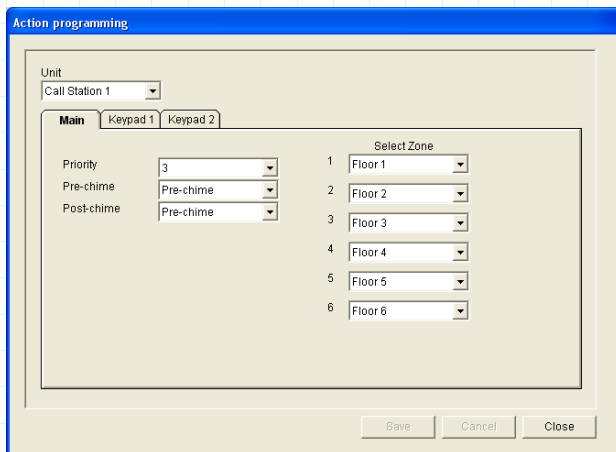


figure 7.10: Main

Proceed as follows:

- 1 Select the priority that is assigned to the messages by the calls station from the Priority drop-down list.
- 2 Select the message or chime that is played at the start of the call from the Pre-chime drop-down list.
- 3 Select the message or chime that is played at the end of the call from the Post-chime drop-down list.

- 4 Assign zones to the zone selection buttons of the call station with the Select zones drop-down lists (see figure 7.11).

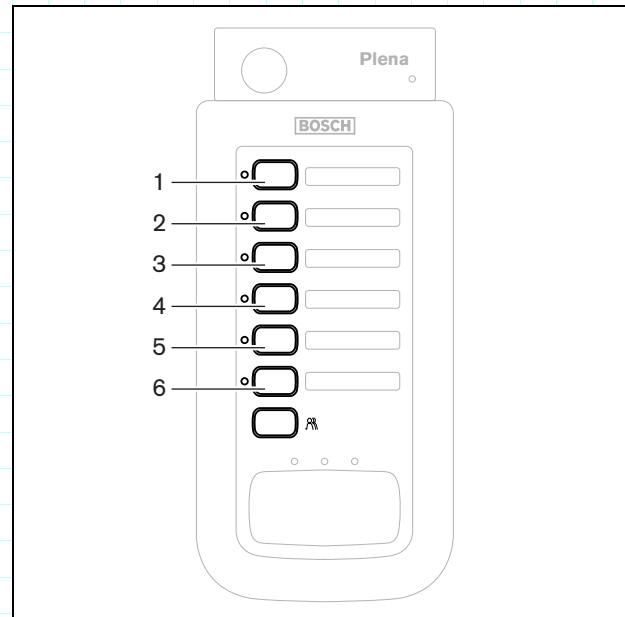


figure 7.11: Call station, buttons



Note

The remaining zone selection button on the call station selects all zones that are assigned to the other zones selection buttons.

- 5 Click the Save button to save the changes.

7.4.3 Keypad

See figure 7.12 for an overview of the Keypad tab.

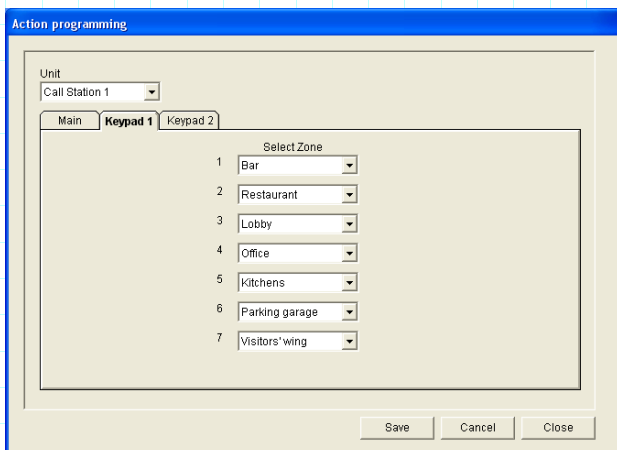


figure 7.12: Keypad

Proceed as follows:

- 1 Assign zones to the zone selection buttons of the call station keypad with the Select zones drop-down lists (see figure 7.11).

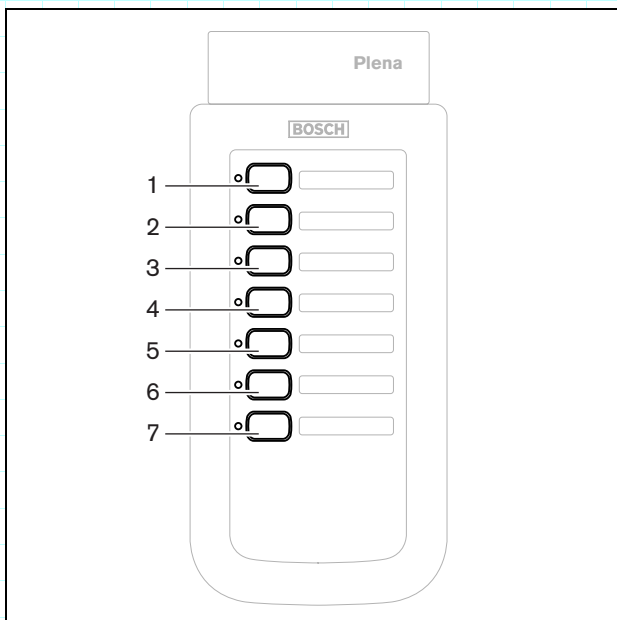


figure 7.13: Call station, buttons

- 2 Click the Save button to save the changes.

© Bosch Security Systems B.V.
Data subject to change without notice
2005-02 | 9922 141 10383en

BOSCH